



Direttore Risorse Umane  
(DRU)

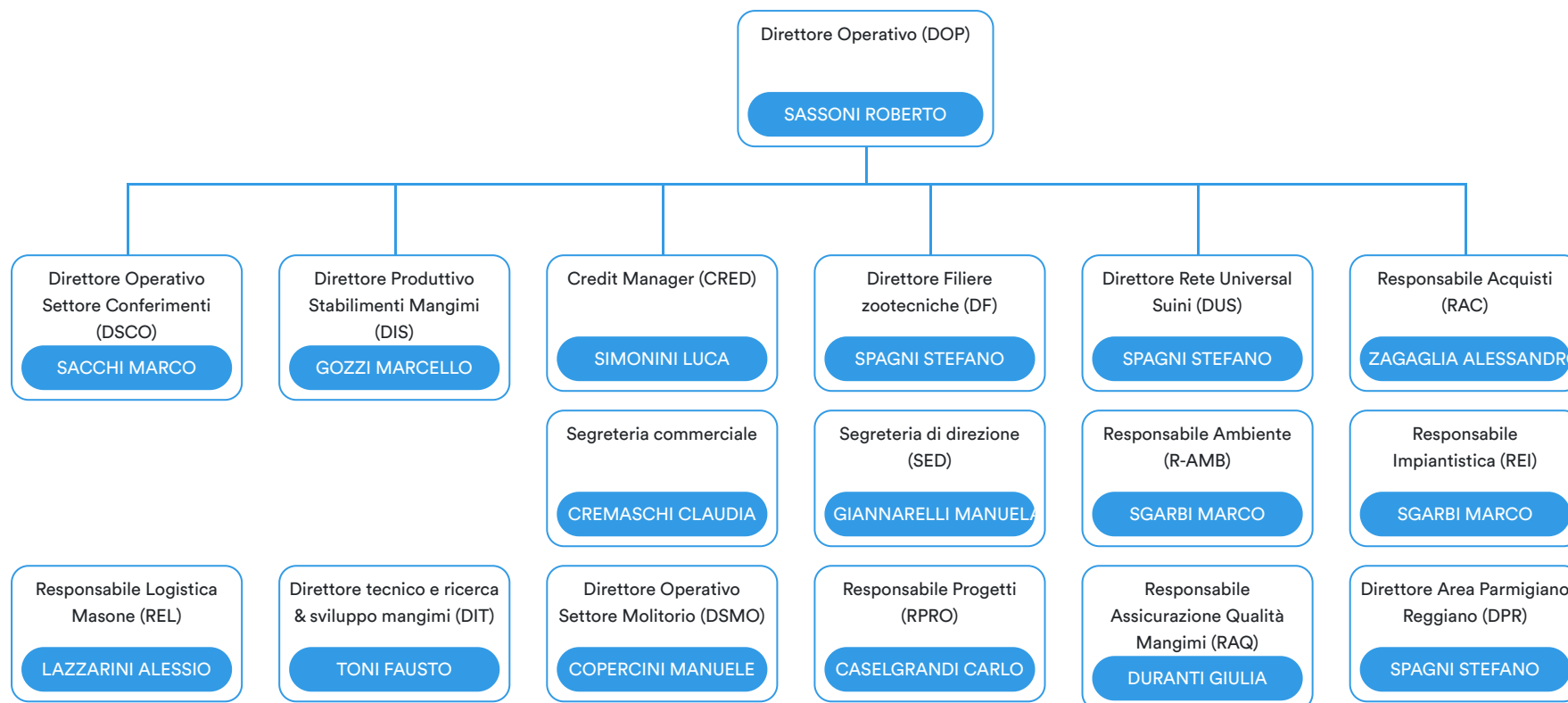
STAGNINI WAINER

Responsabile Ufficio  
Personale (RUP)

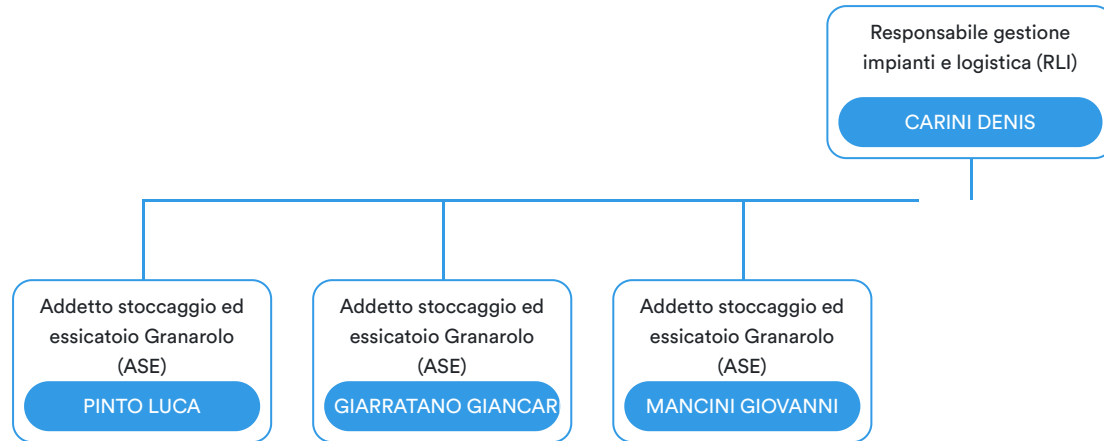
SORRENTINO GIOVANN

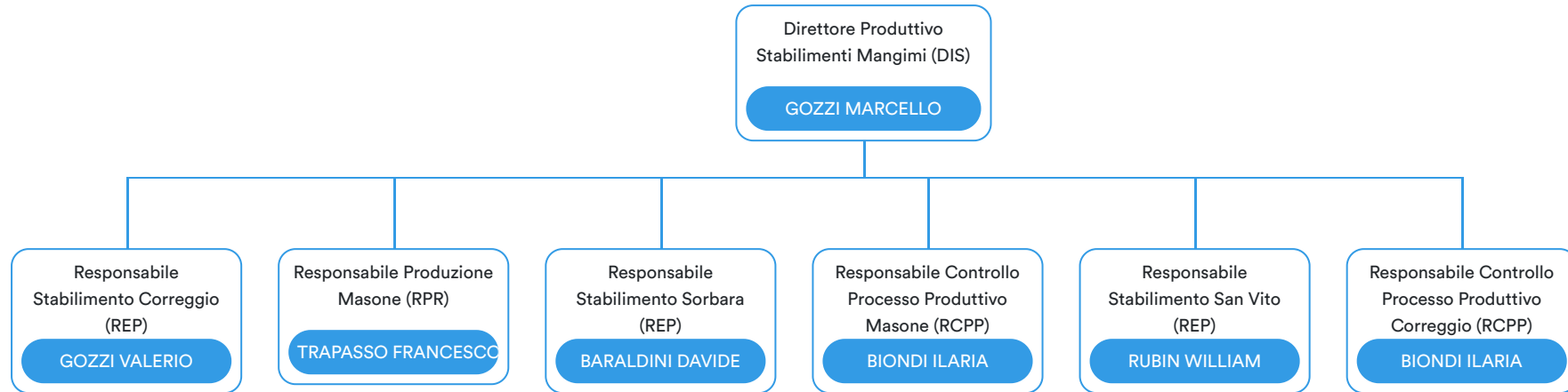












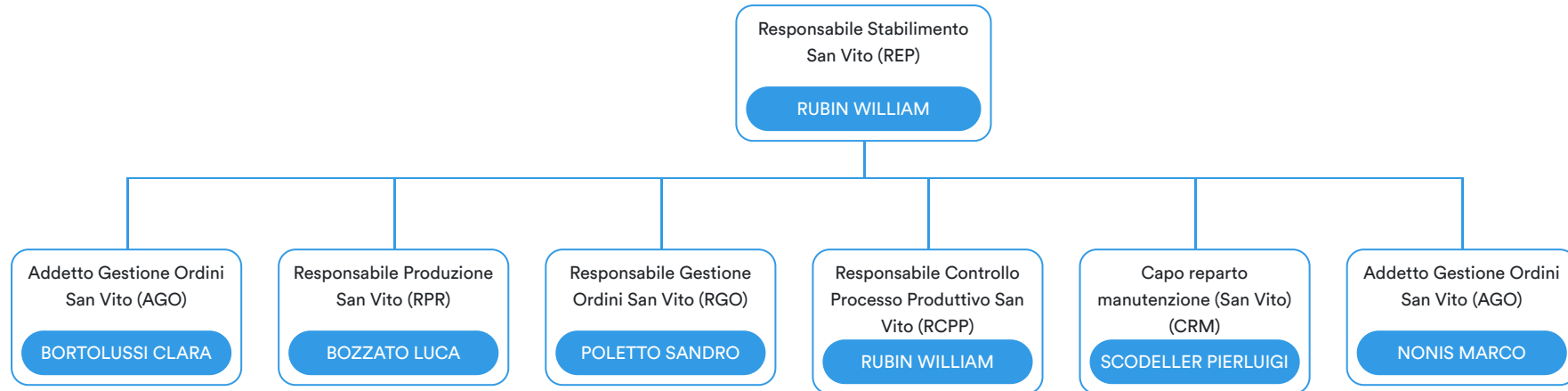


Responsabile Stabilimento  
Sorbara (REP)

BARALDINI DAVIDE

Capo reparto  
manutenzione (Sorbara)  
(CRM)

SANTORO ENZO



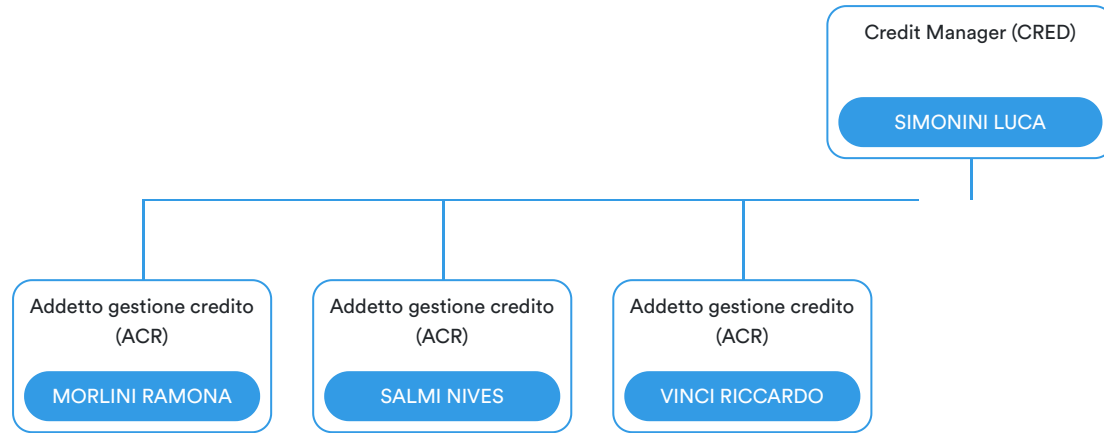
Responsabile Produzione San Vito (RPR)

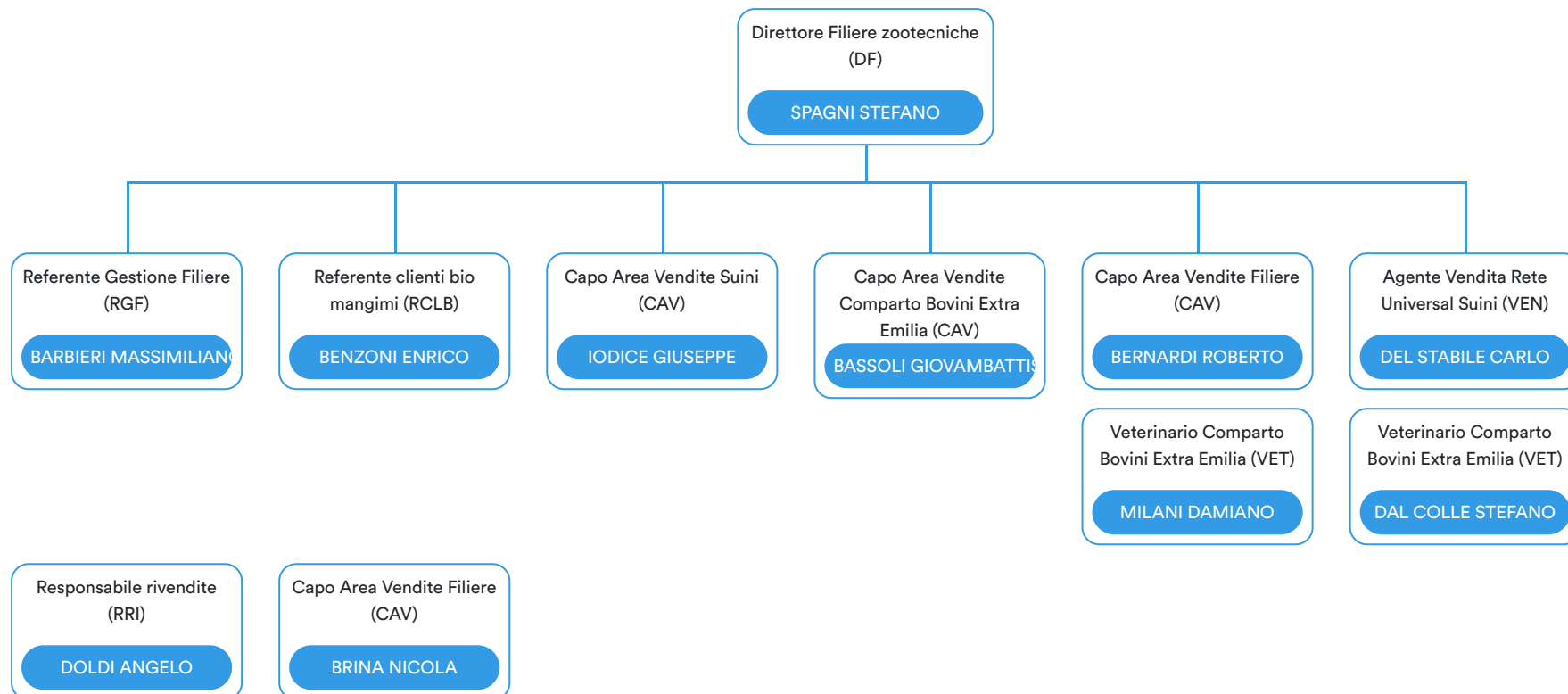
BOZZATO LUCA

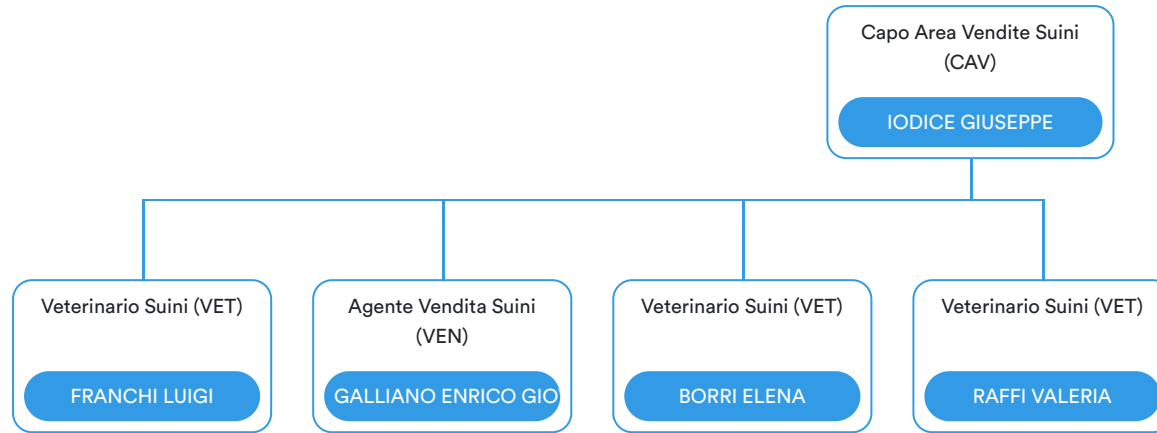
Capo Turno San Vito al Tagliamento (CTT)

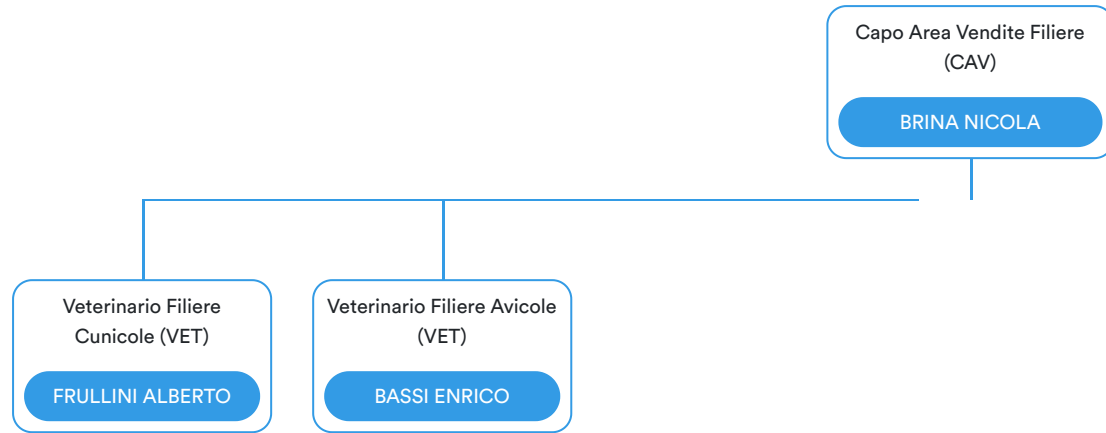
CAPO TURNO SAN VITO

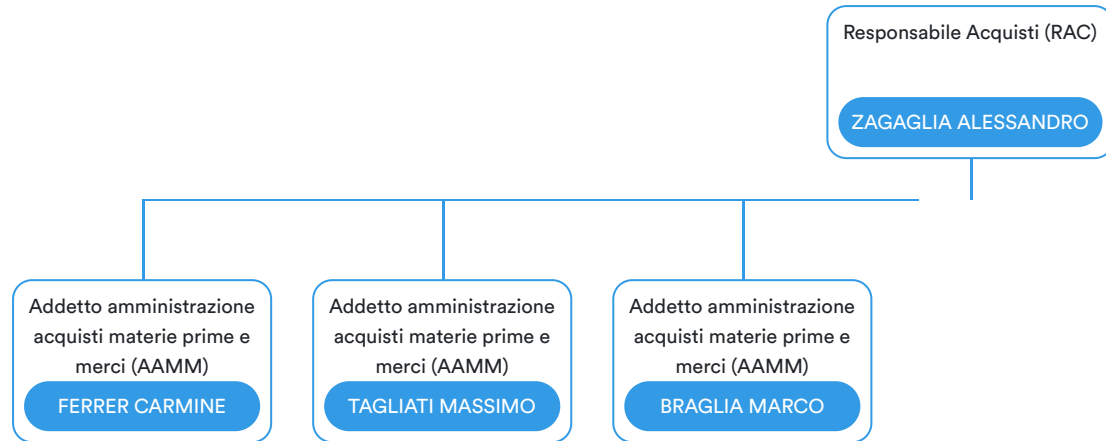










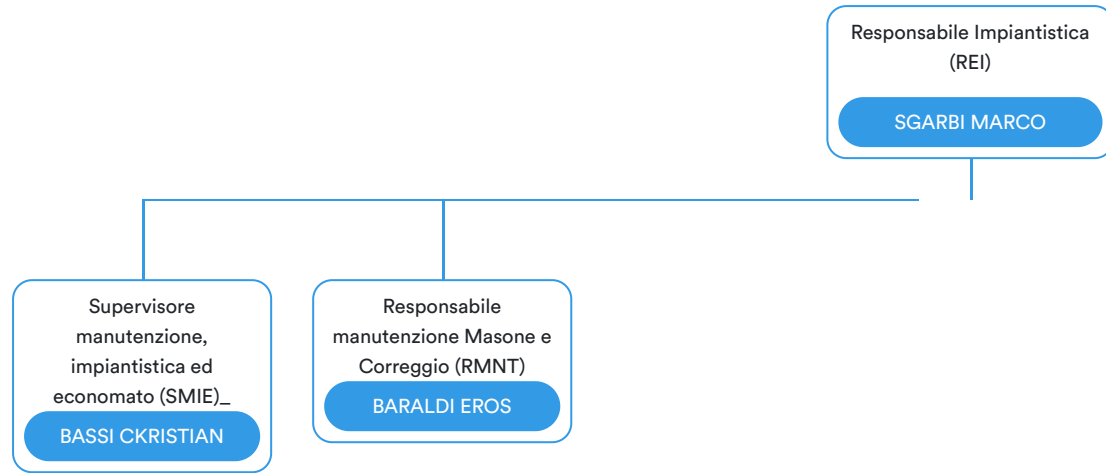


Responsabile Ambiente (R-AMB)

SGARBI MARCO

HSE Specialist (HSES)

DI SOMMA ANDREA



Supervisore manutenzione,  
impiantistica ed economato  
(SMIE)\_

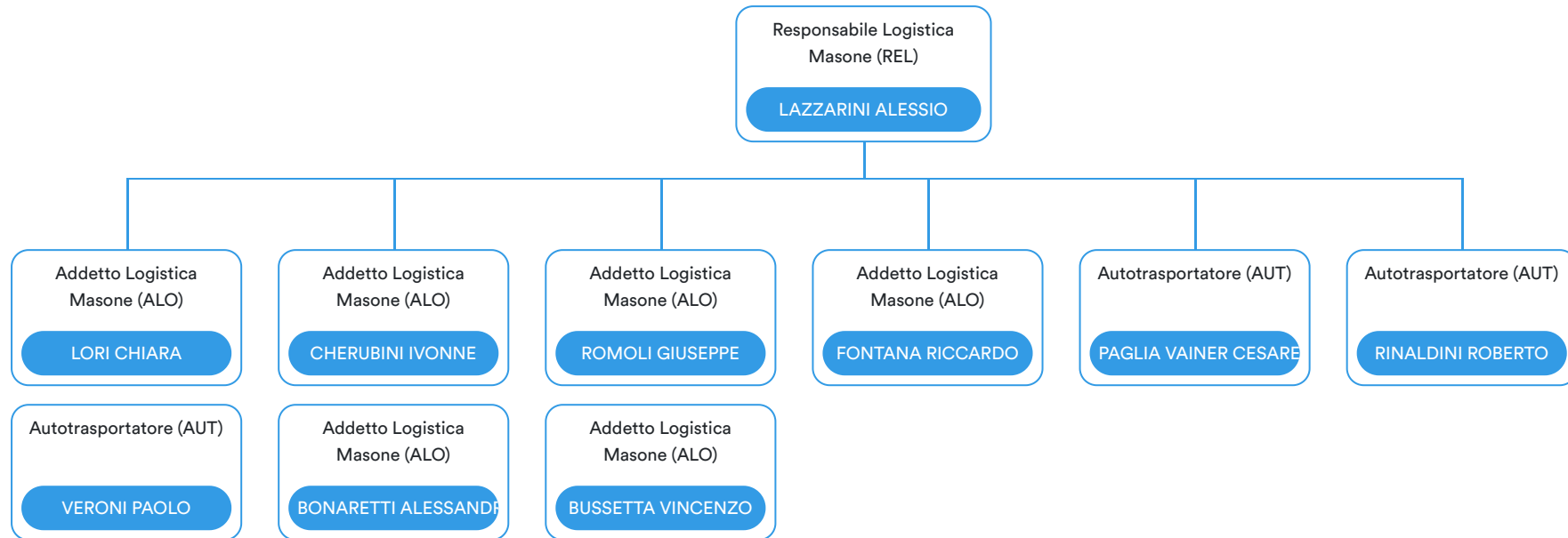
BASSI CKRISTIAN

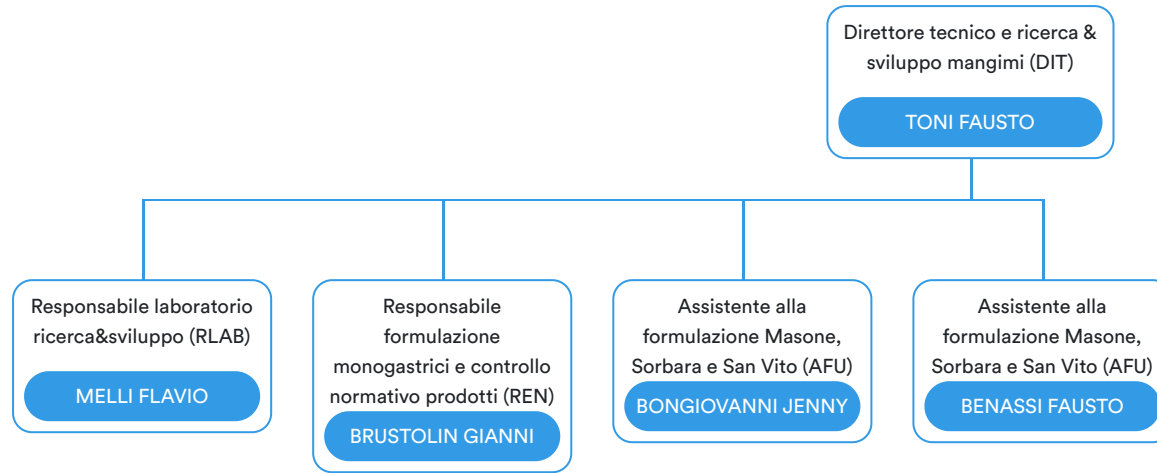
Addetto Economato  
Masone (ECO)

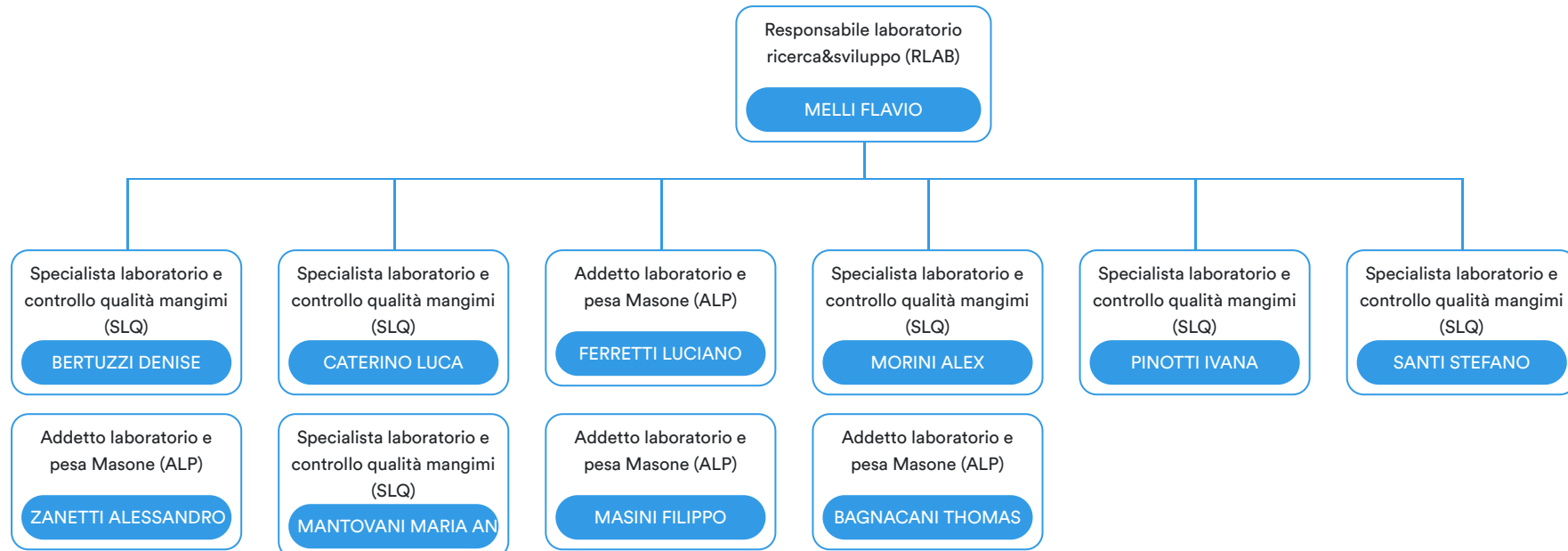
MENGANNA SIMONE

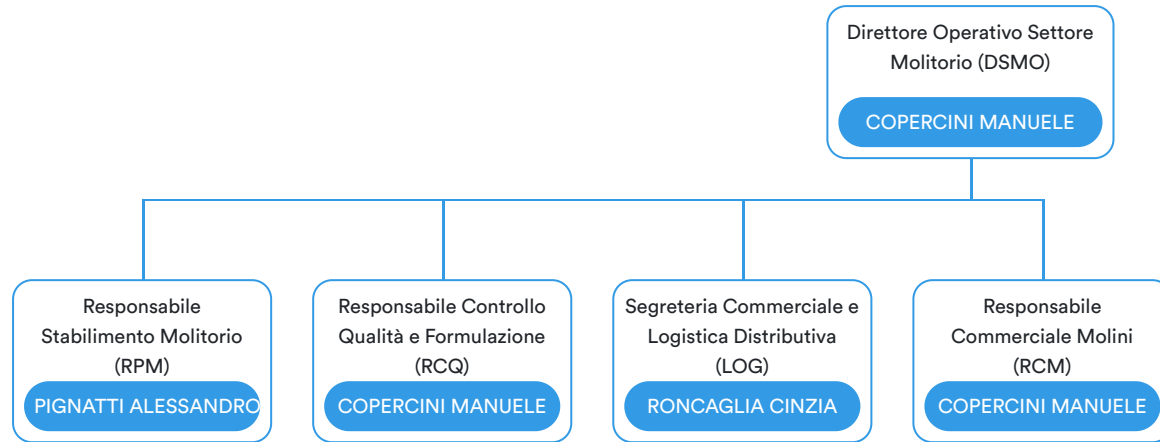


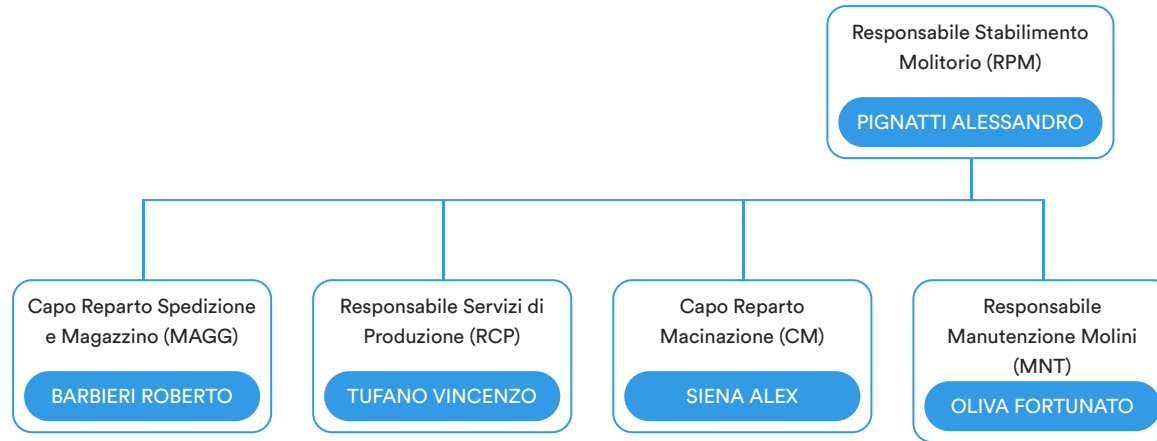


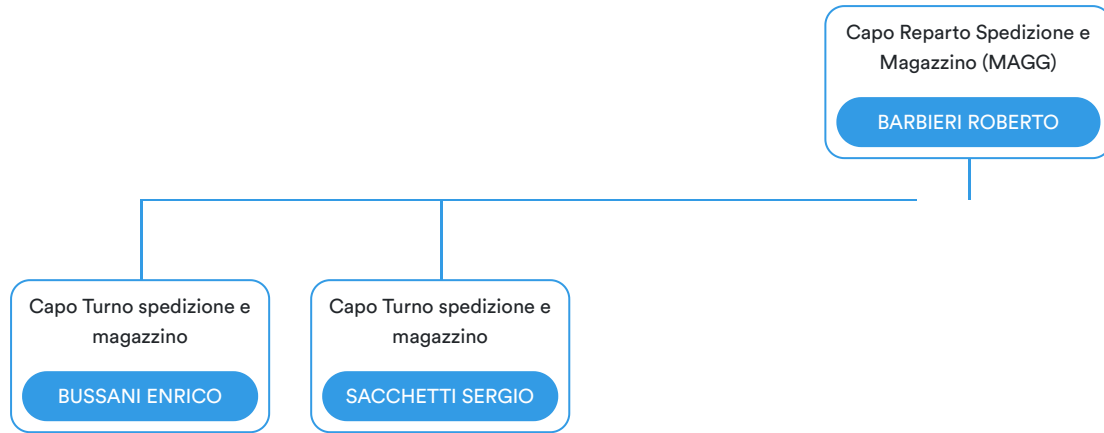


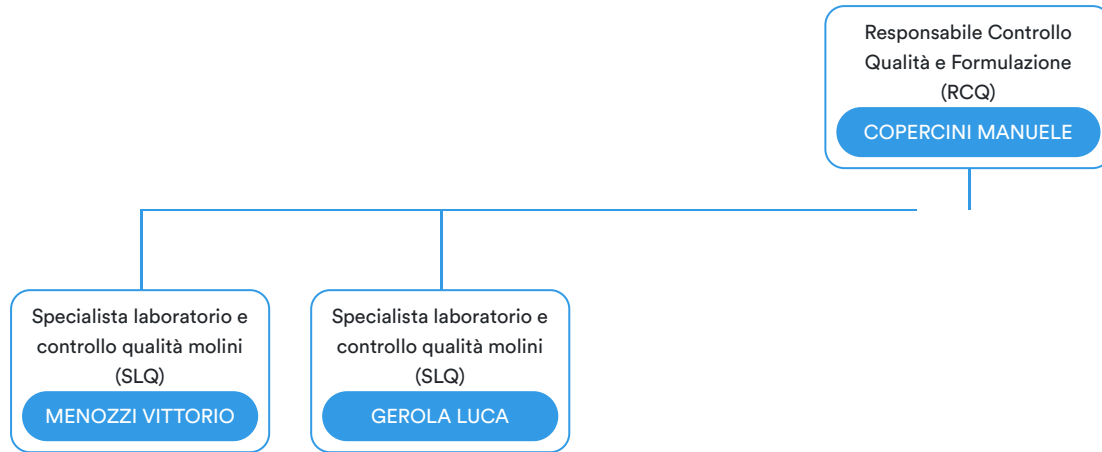




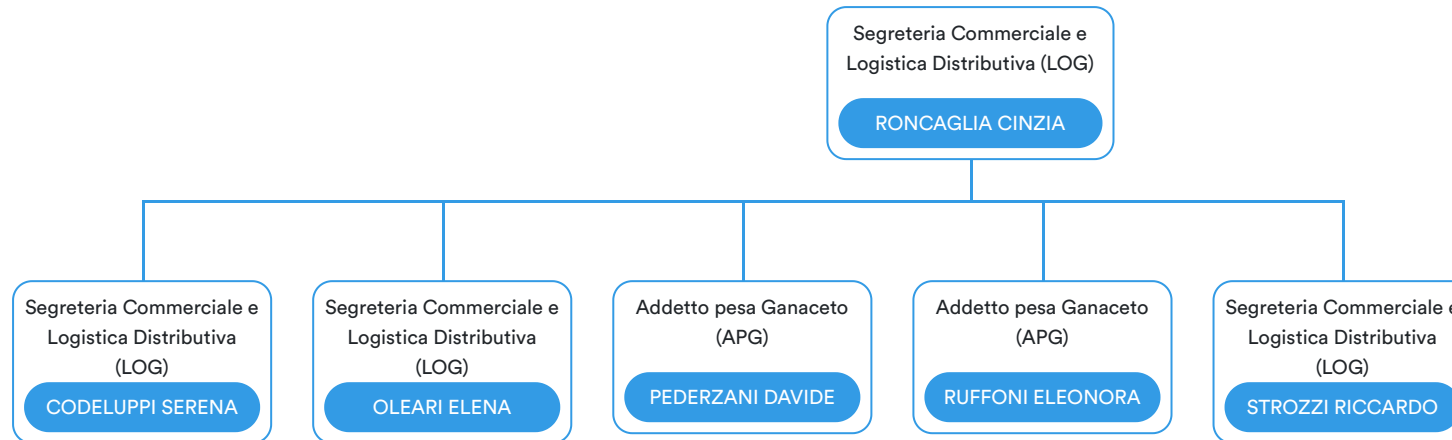


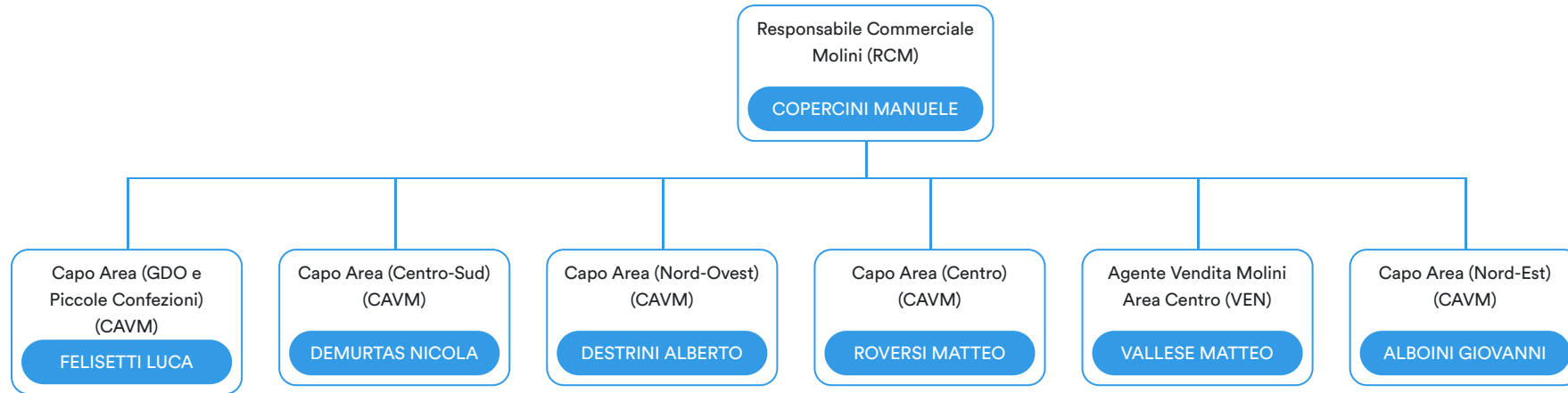












Responsabile Assicurazione  
Qualità Mangimi (RAQ)

DURANTI GIULIA

Servizio Qualità (SQ)

STEFANINI SIMONE

